

# SHOWCASE HOME | JULIA



Street Address: 1024 Seven Sisters Ave

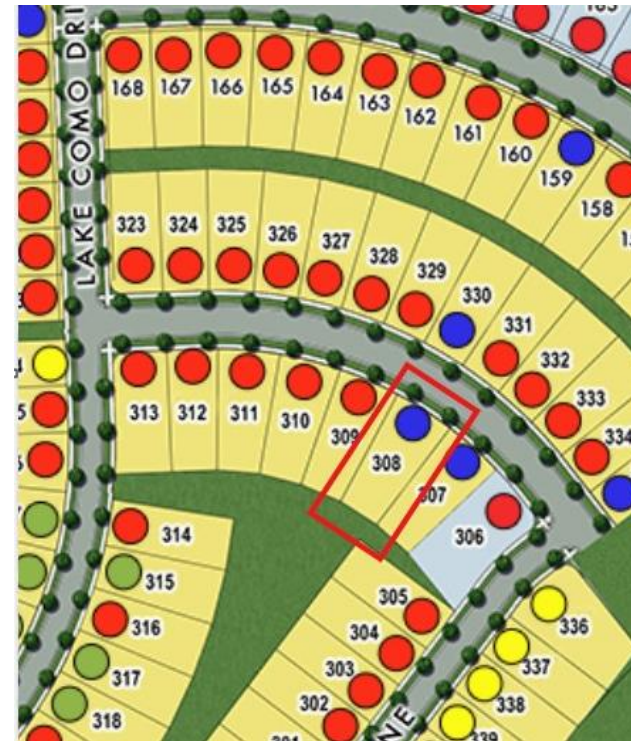
A/C Sq. Ft.: 1,958

Bedrooms: 2                      Bathrooms: 2



Artist Rendering of Julia Model, Elevation BH

**ELEVATION: BH**



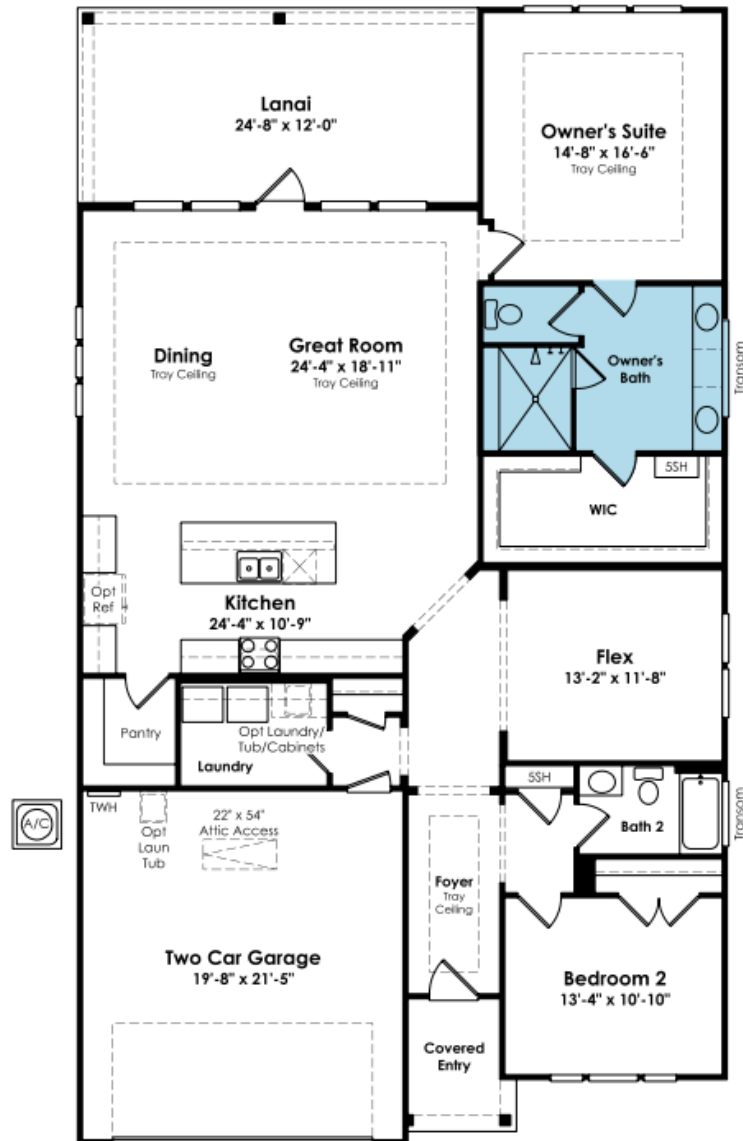
**HOMESITE: 308**

Exterior Color Package: *Monterey Taupe Siding, Thunder Gray Front Door, Tuxedo Gray Shutters, Weathered Wood Roofing.*



©2022. Prices, homesites, amenities, home designs, square footage and other information subject to errors, changes, omissions, deletions, availability, prior sales and withdrawal at any time without notice. Square footage numbers are approximate and may vary depending on the standard measurement used. Photos and/or drawings of homes may show upgraded landscaping and may not represent the lowest priced homes in the community. All renderings and floorplans in these materials are an artist's conceptual drawings and will vary from the actual plans and homes as built. CGC1509406

**KOLTERHOMES**



## SHOWCASE HOME FLOORPLAN

### JULIA

2 Bedroom, 2 Full Bath, Flex Space, Owner's Deluxe Shower with Bench & RainHead, 2-Car Garage



## SHOWCASE HOME FEATURE HIGHLIGHTS

### KITCHEN DETAILS

- GOURMET Kitchen Cabinet & Appliance Package- includes Level 4 Cabinets, 30" Cooktop Cabinet w/ Drawers, Bump Up Over Hood, Built-In Refrigerator Facade, Crown Molding, Double Trash Roll-out
- GE PROFILE 30' Cooktop, Pro-Style Canopy Hood, Built-in Microwave with Trim Kit and Wall Oven in Tower Cabinet, Dishwasher
- Quartz Countertops with Kitchen Full Height Backsplash, to Ceiling, Under Hood
- Farmhouse Cast Iron Kitchen Sink
- Under Kitchen Cabinet Lighting with switch

### DESIGNER FEATURES

- Utility Tub-Rough In Only
- Owner's Deluxe Shower with Bench & RainHead
- Floor Outlet with Brass Trim
- Shaw EVP Flooring throughout home



## SHOWCASE HOME DESIGNER FEATURES | KITCHEN



## SHOWCASE HOME DESIGNER FEATURES OWNER'S BATH



## SHOWCASE HOME DESIGNER FEATURES | BATH II



## SHOWCASE HOME DESIGNER FEATURE | FLOORING

