

SHOWCASE HOME | ALYS



Street Address: 4929 Fairhope Circle

A/C Sq. Ft.: 2,384

Bedrooms: 3

Bathrooms: 3

Move-In Date: September



ELEVATION: A



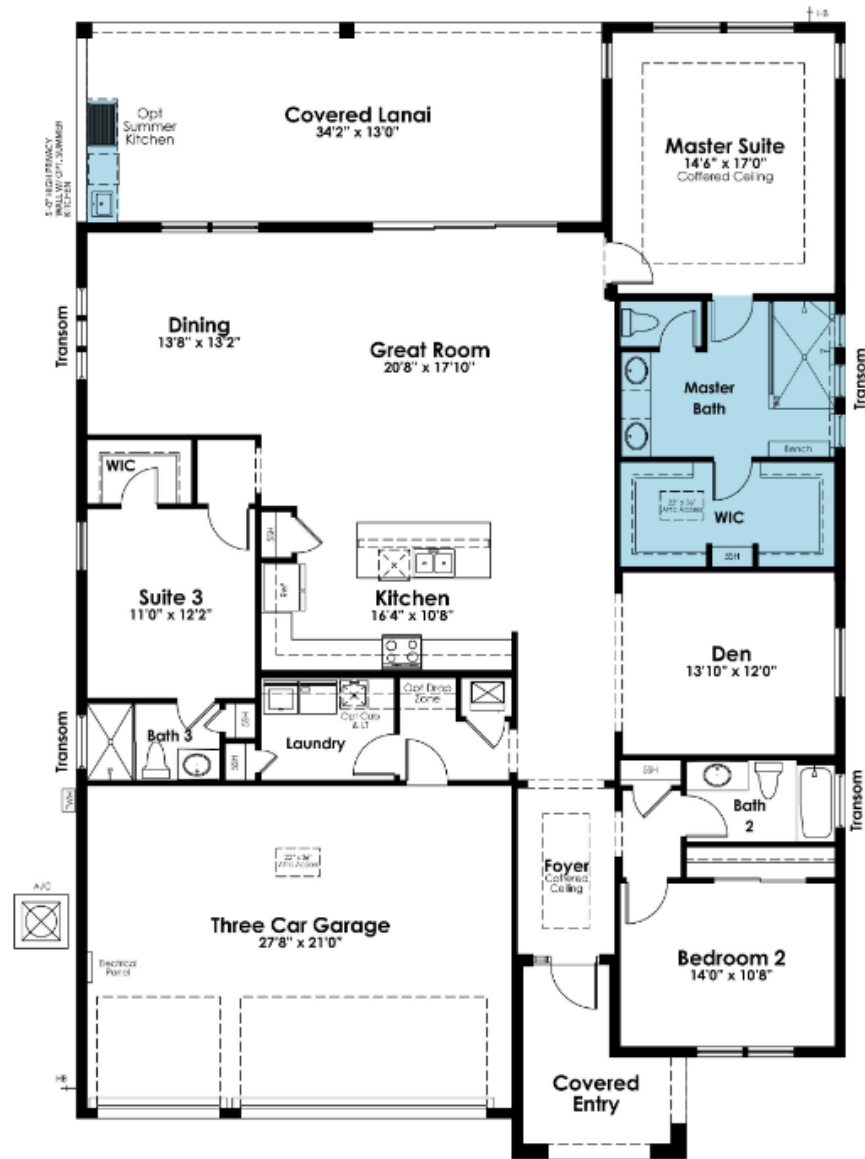
HOMESITE: 370

Exterior Color Package: H



©2022. Prices, homesites, amenities, home designs, square footage and other information subject to errors, changes, omissions, deletions, availability, prior sales and withdrawal at any time without notice. Square footage numbers are approximate and may vary depending on the standard measurement used. Photos and/or drawings of homes may show upgraded landscaping and may not represent the lowest priced homes in the community. All renderings and floorplans in these materials are an artist's conceptual drawings and will vary from the actual plans and homes as built. CGC1509406

KOLTERHOMES®



SHOWCASE HOME FLOORPLAN

Alys

This single-story 3 Bedroom floorplan stands out for its spacious open gathering spaces perfectly crafted for entertaining guests and relaxed everyday living. The Kitchen overlooks a bright and welcoming Dining and Great Room appointed with large windows and sliding glass doors leading out to a large Covered Lanai that overlooks an expansive Waterview.

SHOWCASE HOME FEATURE HIGHLIGHTS

KITCHEN DETAILS

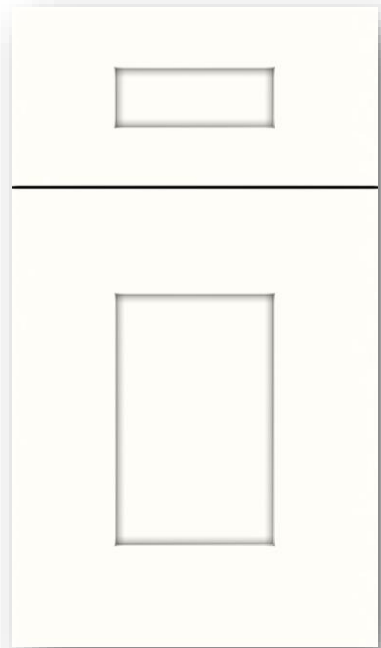
- Gourmet Kitchen with pot and pan cabinet
- Chimney style exhaust hood
- 30" Stainless Steel Gas Cooktop
- Luxury veined quartz countertop— 3cm
- Luxury veined quartz full-height backsplash
- Upgraded cabinet crown moulding
- 24" Deep Cabinet above the refrigerator with side panel

DESIGNER FEATURES

- Frameless Shower enclosures in Master Bath and Bath 3
- Deluxe Master Bath layout & added vanity drawer storage
- Tile to-the-ceiling in all bathroom showers
- Laminate wood plank flooring in Main Living, Den, and Master Suite
- Designer glass front door and sidelight
- Washable flat interior paint color throughout



SHOWCASE HOME DESIGNER FEATURES | KITCHEN



Frameless Painted White Cabinets



Cabinet Hardware



Veined Quartz-3cm



Veined Full Height Backsplash



MOEN Faucet



Laminate Wood Plank Flooring



Interior Wall Color

SHOWCASE HOME DESIGNER FEATURES | MASTER BATH



Vanity Cabinets



Quartz 3cm Countertop



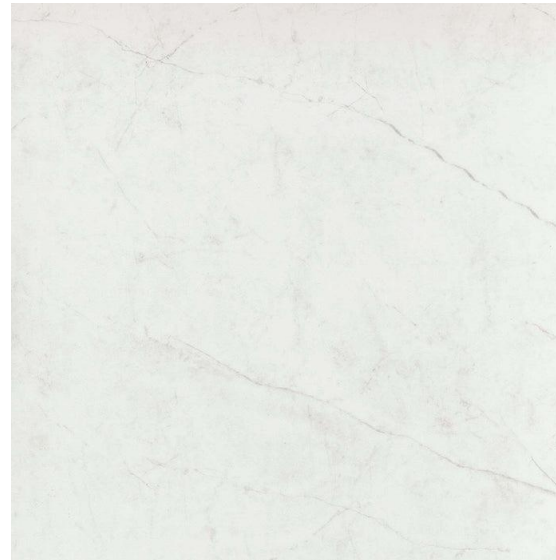
Cabinet Pulls



12X24 Shower Wall Tile



Moen Widespread
Faucet Chrome



24x24 Floor Tile



Shower Floor Tile

SHOWCASE HOME DESIGNER FEATURES | BATH 2



Vanity Cabinets



White Quartz 3cm



Cabinet Pulls



Bath 2 Tub Wall Tile



Moen Single Lever Faucet



12x24 Floor Tile



SHOWCASE HOME DESIGNER FEATURES | BATH 3



Vanity Cabinets



White Quartz 3cm



Moen Single Lever Faucet



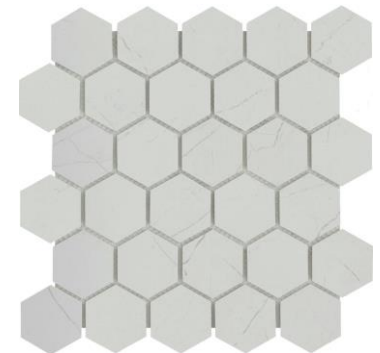
Cabinet Pulls



12x24 Floor Tile



Wall Tile
12X24



Matching Shower Floor Tile