

SHOWCASE HOME | MAPLE

CRESSWIND®

Street Address: 198 BEAR WAY

A/C Sq. Ft.: 2,216

Bedrooms: 3

Bathrooms: 2.5

Move-In Date: Jan/Feb 2025



ELEVATION: BS

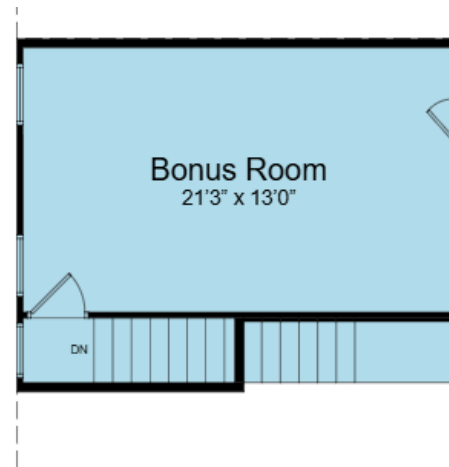
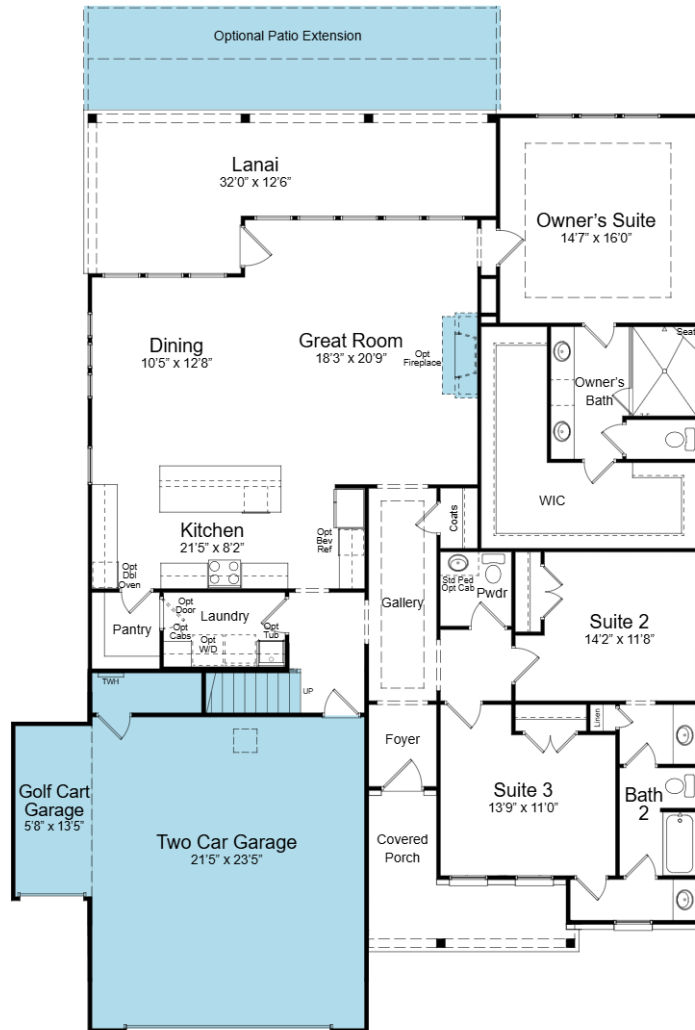
HOMESITE: 756

Cresswind Twin Lakes| 118 Hartwell Court, Hoschton, GA 30548



©2022. Prices, homesites, amenities, home designs, square footage and other information subject to errors, changes, omissions, deletions, availability, prior sales and withdrawal at any time without notice. Square footage numbers are approximate and may vary depending on the standard measurement used. Photos and/or drawings of homes may show upgraded landscaping and may not represent the lowest priced homes in the community. All renderings and floorplans in these materials are an artist's conceptual drawings and will vary from the actual plans and homes as built. CGC1509406

KOLTERHOMES®



SHOWCASE HOME FLOORPLAN

MAPLE

3 Bedroom, 2.5 Bath, Great Room, Fireplace
8' Covered Extended Porch, 2-Car Garage,
Golf Cart Garage and Unfinished Bonus Room

Cresswind Twin Lakes| 118 Hartwell Court, Hoschton, GA 30548



SHOWCASE HOME FEATURE HIGHLIGHTS

KITCHEN DETAILS

- 30" gas 5-Burner Cooktop
- Cabinet Crown Molding
- Soft-Close Drawers
- Quartz Countertops
- EVP Flooring
- Under Cabinet Lighting
- Stainless Steel Single Bowl Undermount Sink

DESIGNER FEATURES

- 4 FT. Garage Extension
- Frameless Shower in Owner's Bath
- Laundry Room with Wall cabinets and Laundry Sink
- Gourmet Kitchen
- Unfinished Bonus Room

Cresswind Twin Lakes| 118 Hartwell Court, Hoschton, GA 30548



©2022. Prices, homesites, amenities, home designs, square footage and other information subject to errors, changes, omissions, deletions, availability, prior sales and withdrawal at any time without notice. Square footage numbers are approximate and may vary depending on the standard measurement used. Photos and/or drawings of homes may show upgraded landscaping and may not represent the lowest priced homes in the community. All renderings and floorplans in these materials are an artist's conceptual drawings and will vary from the actual plans and homes as built. CGC1509406

KOLTERHOMES[®]

SHOWCASE HOME DESIGNER FEATURES | KITCHEN



**LEVEL 4 KAYES CABINETS
BUCKSKIN**



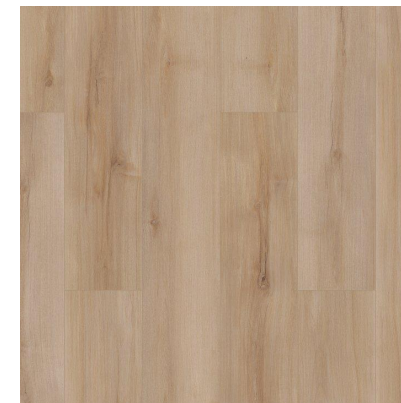
**QUARTZ COUNTERTOP
ARIEL**



BACKSPLASH



**MOEN BRANTFORD
SPOT RESIST STAINLESS**



**SHAW EVP FLOORING
REVERED – LUCENT OAK**

Cresswind Twin Lakes | 118 Hartwell Court, Hoschton, GA 30548



SHOWCASE HOME DESIGNER FEATURES | KITCHEN APPLIANCES



Cresswind Twin Lakes| 118 Hartwell Court, Hoschton, GA 30548



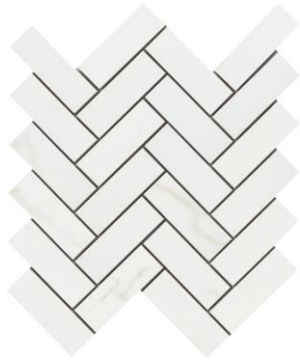
©2022. Prices, homesites, amenities, home designs, square footage and other information subject to errors, changes, omissions, deletions, availability, prior sales and withdrawal at any time without notice. Square footage numbers are approximate and may vary depending on the standard measurement used. Photos and/or drawings of homes may show upgraded landscaping and may not represent the lowest priced homes in the community. All renderings and floorplans in these materials are an artist's conceptual drawings and will vary from the actual plans and homes as built. CGC1509406

KOLTERHOMES®

SHOWCASE HOME DESIGNER FEATURES | OWNERS BATH



**LEVEL 4
CABINETS –
KAYES
BUCKSKIN**



SHOWER FLOOR



**CONTESSA ORO MATTE
SHOWER WALLS AND
BATHROOM FLOOR**



**MOEN VOSS
SINGLE LEVER
BRUSHED
NICKEL**



**SILESTONE
QUARTZ-
ARIEL**

Cresswind Twin Lakes| 118 Hartwell Court, Hoschton, GA 30548



SHOWCASE HOME DESIGNER FEATURES | BATH 2



**LEVEL 4
CABINETS
KAYES
BUCKSKIN**



**ARIEL
SILESTONE
QUARTZ**



**MOEN VOSS
SINGLE LEVER**

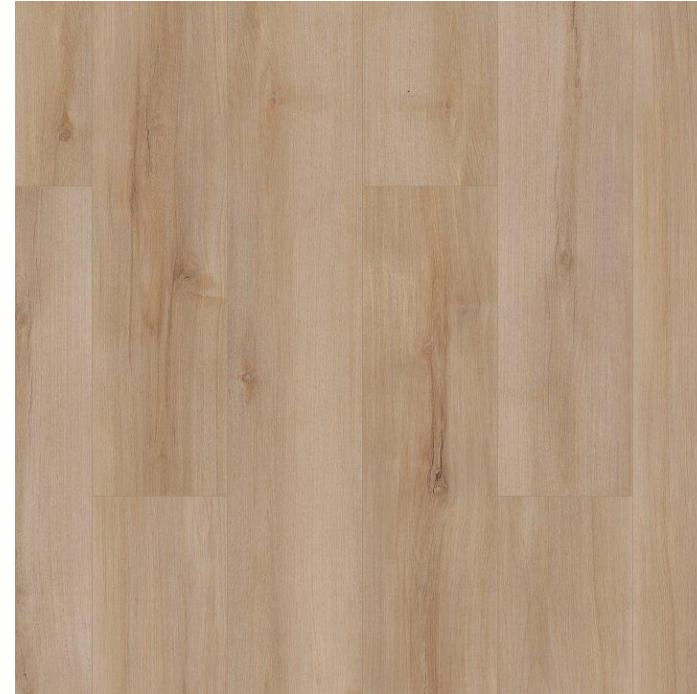


**SHOWER WALL AND FLOOR TILE
SOLARA FIRENZA 12X24**

Cresswind Twin Lakes| 118 Hartwell Court, Hoschton, GA 30548



SHOWCASE HOME DESIGNER FEATURES MAIN LEVEL - GENERAL FINISHES



**SHAW EVP FLOORING
REVERED
LUCENT OAK**

Cresswind Twin Lakes| 118 Hartwell Court, Hoschton, GA 30548



SHOWCASE HOME DESIGNER FEATURES | LIGHTING MAIN LEVEL



P710073-009



Cresswind Twin Lakes | 118 Hartwell Court, Hoschton, GA 30548

