

SHOWCASE HOME | PEAR

CRESSWIND®

Street Address: 163 GENEVA WAY

A/C Sq. Ft.: 2,390

Price: \$739,900

Bedrooms: 3

Bathrooms: 3

Move In: 9/30/24



ELEVATION: CH

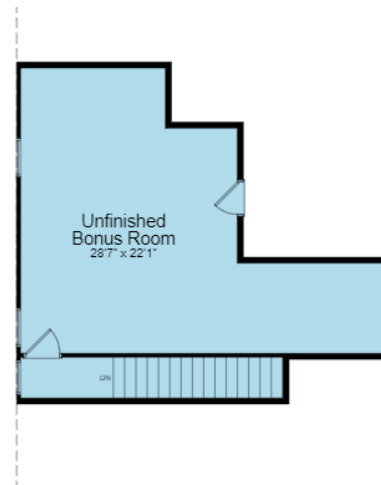
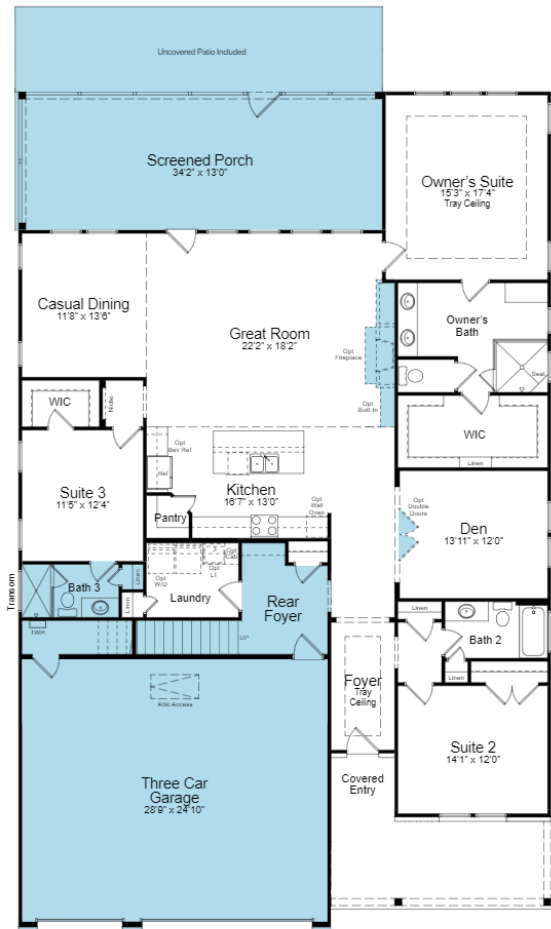
HOMESITE: 656

Cresswind Twin Lakes | 118 Hartwell Court, Hoschton, GA 30548



©2022. Prices, homesites, amenities, home designs, square footage and other information subject to errors, changes, omissions, deletions, availability, prior sales and withdrawal at any time without notice. Square footage numbers are approximate and may vary depending on the standard measurement used. Photos and/or drawings of homes may show upgraded landscaping and may not represent the lowest priced homes in the community. All renderings and floorplans in these materials are an artist's conceptual drawings and will vary from the actual plans and homes as built. CGC1509406

KOLTERHOMES®



SHOWCASE HOME FLOORPLAN

PEAR

3 Bedroom, 3 Bath, Den, Great Room, Covered, Screened Lanai, 3-Car Extended Garage and Unfinished Bonus

Cresswind Twin Lakes | 118 Hartwell Court, Hoschton, GA 30548



SHOWCASE HOME FEATURE HIGHLIGHTS

KITCHEN DETAILS

- 30" gas 5-burner cooktop
- Cabinet crown molding
- Quartz countertops
- EVP flooring
- Under Cabinet Lighting
- Stainless Steel Single Bowl Undermount Sink

DESIGNER FEATURES

- 4 FT. garage extension
- Frameless shower in owner's bath
- Laundry Room with wall cabinets and laundry sink
- Gourmet kitchen
- Direct vent fireplace
- Screened Lanai
- Unfinished Bonus Room

Cresswind Twin Lakes| 118 Hartwell Court, Hoschton, GA 30548



SHOWCASE HOME DESIGNER FEATURES | KITCHEN



**LEVEL 4 KAYES CABINETS
WHITE – PERIMETER
BUCKSKIN - ISLAND**



**MOEN ALIGN SPRING PULL DOWN
FAUCET AND SOAP DISPENSER
STAINLESS**



**LEVEL 3 QUARTZ COUNTERTOP
LUSSO**



**CATCH ICE WHITE 3X6
HERRINGBONE
BACKSPLASH**

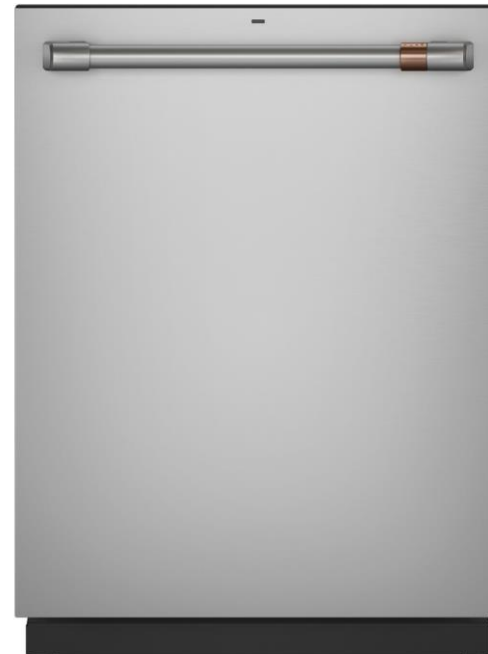


**LEVEL 3 EVP FLOORING
ENTERPRISE/ RAVENSWOOD
OAK**

Cresswind Twin Lakes | 118 Hartwell Court, Hoschton, GA 30548



SHOWCASE HOME DESIGNER FEATURES | KITCHEN APPLIANCES



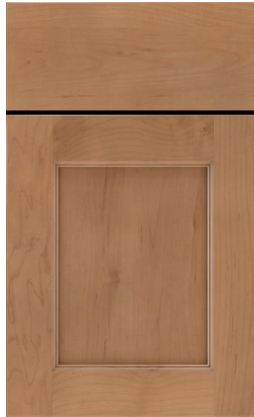
Cresswind Twin Lakes | 118 Hartwell Court, Hoschton, GA 30548



©2022. Prices, homesites, amenities, home designs, square footage and other information subject to errors, changes, omissions, deletions, availability, prior sales and withdrawal at any time without notice. Square footage numbers are approximate and may vary depending on the standard measurement used. Photos and/or drawings of homes may show upgraded landscaping and may not represent the lowest priced homes in the community. All renderings and floorplans in these materials are an artist's conceptual drawings and will vary from the actual plans and homes as built. CGC1509406

KOLTERHOMES

SHOWCASE HOME DESIGNER FEATURES | OWNERS BATH



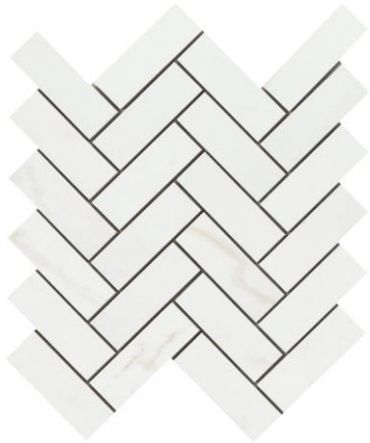
**LEVEL 4
CABINETS –
KAYES
BUCKSKIN**



**MOEN VOSS
BRUSHED
NICKEL**



**SILESTONE
QUARTZ-
ARIEL**



SHOWER FLOOR



**CONTESSA ORO MATTE
SHOWER WALLS AND
BATHROOM FLOOR**

Cresswind Twin Lakes| 118 Hartwell Court, Hoschton, GA 30548



SHOWCASE HOME DESIGNER FEATURES | BATH 2



**LEVEL 4
CABINETS
KAYES
BUCKSKIN**



**ARIEL
SILESTONE
QUARTZ**



**MOEN VOSS
SINGLE LEVER
BRUSHED
NICKEL**



**BATHROOM FLOOR AND WALLS
SOLARA FIRENZA**

Cresswind Twin Lakes| 118 Hartwell Court, Hoschton, GA 30548



SHOWCASE HOME DESIGNER FEATURES | BATH 3



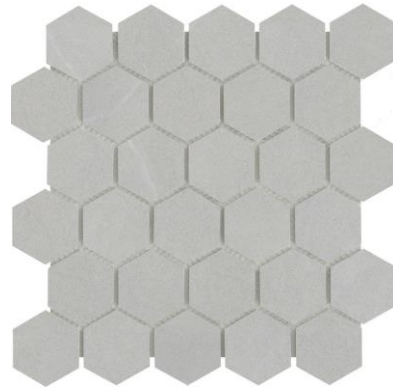
**LEVEL 4
CABINETS
KAYES
BUCKSKIN**



**ARIEL
SILESTONE
QUARTZ**



**MOEN VOSS
SINGLE LEVER**



SHOWER FLOORS



**BATHROOM FLOOR AND WALLS
SOLARA FIRENZA**

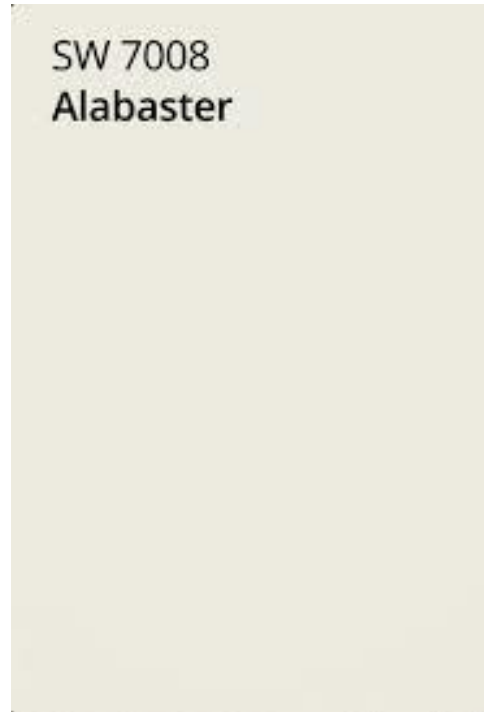
Cresswind Twin Lakes| 118 Hartwell Court, Hoschton, GA 30548



©2022. Prices, homesites, amenities, home designs, square footage and other information subject to errors, changes, omissions, deletions, availability, prior sales and withdrawal at any time without notice. Square footage numbers are approximate and may vary depending on the standard measurement used. Photos and/or drawings of homes may show upgraded landscaping and may not represent the lowest priced homes in the community. All renderings and floorplans in these materials are an artist's conceptual drawings and will vary from the actual plans and homes as built. CGC1509406

KOLTERHOMES®

SHOWCASE HOME DESIGNER FEATURES MAIN LEVEL - GENERAL FINISHES



**LEVEL 3 EVP FLOORING
ENTERPRISE RAVENSWOOD**

Cresswind Twin Lakes| 118 Hartwell Court, Hoschton, GA 30548



©2022. Prices, homesites, amenities, home designs, square footage and other information subject to errors, changes, omissions, deletions, availability, prior sales and withdrawal at any time without notice. Square footage numbers are approximate and may vary depending on the standard measurement used. Photos and/or drawings of homes may show upgraded landscaping and may not represent the lowest priced homes in the community. All renderings and floorplans in these materials are an artist's conceptual drawings and will vary from the actual plans and homes as built. CGC1509406

KOLTERHOMES®

SHOWCASE HOME DESIGNER FEATURES | LIGHTING MAIN LEVEL



Cresswind Twin Lakes | 118 Hartwell Court, Hoschton, GA 30548

