

SHOWCASE HOME | WILLOW

Street Address: 5118 SW Pomegranate Way

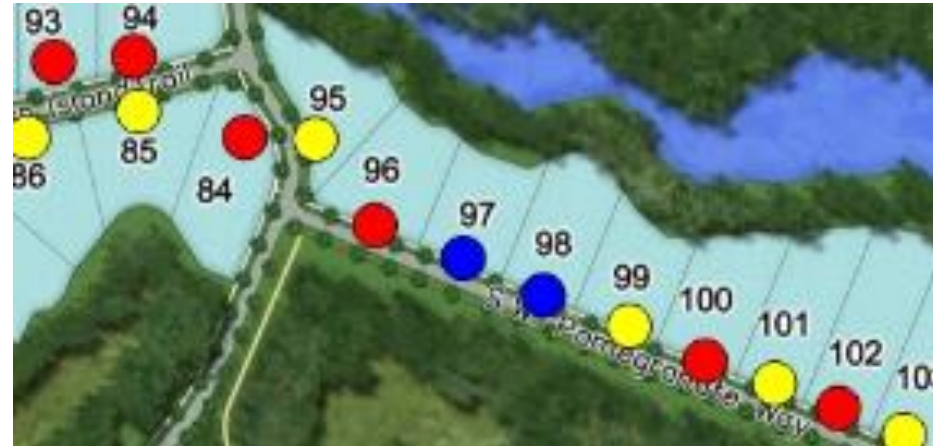
A/C Sq. Ft.: 3874

Bedrooms: 3 + Club Room

Bathrooms: 3 Full & 2 Half

Move-In Date: April/May 2024

CANOPY CREEK



ELEVATION: A

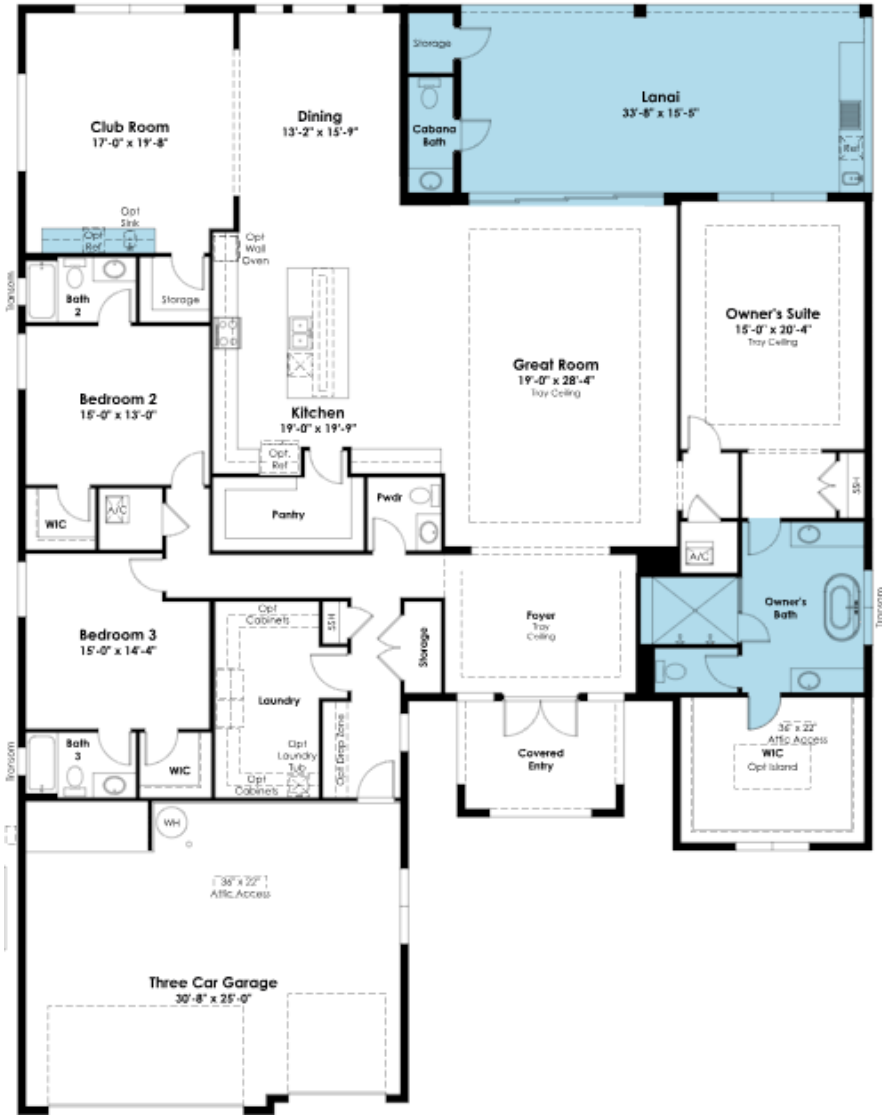
HOMESITE: 98

Canopy Creek | 12345 Main Street, Community Town, FL, 12345



©2022. Prices, homesites, amenities, home designs, square footage and other information subject to errors, changes, omissions, deletions, availability, prior sales and withdrawal at any time without notice. Square footage numbers are approximate and may vary depending on the standard measurement used. Photos and/or drawings of homes may show upgraded landscaping and may not represent the lowest priced homes in the community. All renderings and floorplans in these materials are an artist's conceptual drawings and will vary from the actual plans and homes as built. CGC1509406

KOLTERHOMES®



SHOWCASE HOME FLOORPLAN

THE WILLOW

Canopy Creek | 12345 Main Street, Community Town, FL, 12345



©2022. Prices, homesites, amenities, home designs, square footage and other information subject to errors, changes, omissions, deletions, availability, prior sales and withdrawal at any time without notice. Square footage numbers are approximate and may vary depending on the standard measurement used. Photos and/or drawings of homes may show upgraded landscaping and may not represent the lowest priced homes in the community. All renderings and floorplans in these materials are an artist's conceptual drawings and will vary from the actual plans and homes as built. CGC1509406

KOLTERHOMES

SHOWCASE HOME FEATURE HIGHLIGHTS

KITCHEN DETAILS

- DOUBLE WATERFALL COUNTERTOP
- GLASS CABINETS WITH LIGHTS
- CABINET CROWN MOLDING
- SECOND TIER CABINETS
- 3" QUARTZ ISLAND EDGE
- DOUBLE TRASH PULLOUT
- MONOGRAM BUILT IN APPLIANCES

DESIGNER FEATURES

SUMMER KITCHEN

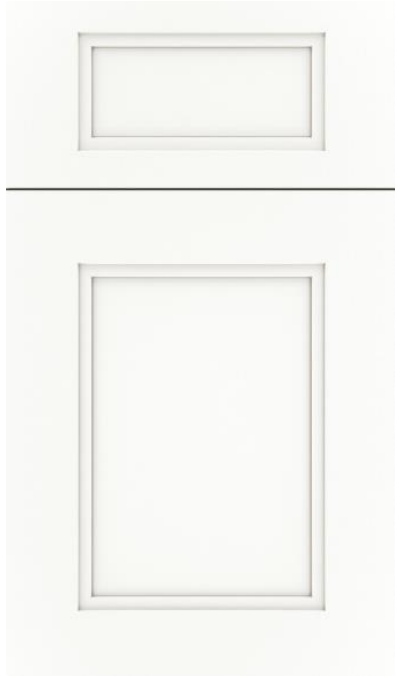
FREE STANDING TUB IN OWNERS

CABANA BATH

WET BAR IN CLUB ROOM

HARDWOODS THROUGHOUT

SHOWCASE HOME DESIGNER FEATURES | KITCHEN



**CABINETS
KEELIE MAPLE
WHITE CAP**



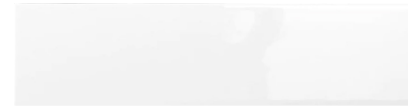
HARDWARE 625-160SN



**MOEN STO
SPOT RESISTANT
STAINLESS**



**COUNTERTOPS
CAMBRIA QUARTZ
IRONSBRIDGE**



**BACKSPLASH
CATCH ICE
3X12 GLOSSY**



**DRIFTWOOD
COLLECTIVE
SAIL CLOTH**

SHOWCASE HOME DESIGNER FEATURES | OWNERS BATH



**KEELIE MAPLE
DRIZZLE**



HARDWARE 625-160SN



**MOEN ALIGN 8"
BRUSHED NICKEL**



**COUNTERTOPS
CAMBRIA
SMITHFIELD**



**SHOWER WALL AND
BATHROOM FLOOR
VARA RIBIA
12X24 POLISHED**

Canopy Creek | 12345 Main Street, Community Town, FL, 12345



©2022. Prices, homesites, amenities, home designs, square footage and other information subject to errors, changes, omissions, deletions, availability, prior sales and withdrawal at any time without notice. Square footage numbers are approximate and may vary depending on the standard measurement used. Photos and/or drawings of homes may show upgraded landscaping and may not represent the lowest priced homes in the community. All renderings and floorplans in these materials are an artist's conceptual drawings and will vary from the actual plans and homes as built. CGC1509406

KOLTERHOMES®

SHOWCASE HOME DESIGNER FEATURES | BATH 2



CABINETS
TAMARIND MAPLE
WHITE CAP



HARDWARE 625-160SN



MOEN ALIGN 8"
BRUSHED NICKEL
SINGLE LEVER



COUNTERTOPS
CAMBRIA
TORQUAY



LISTELLO
WINTER FORST
MARBLE CHEVRON



TUB WALLS
CATCH ICE
GLOSS 4X16



BATHROOM FLOOR
KUDOS PERLA
12X24 MATTE

SHOWCASE HOME DESIGNER FEATURES | BATH 3



**CABINETS
TAMARIND MAPLE
DRIZZLE**



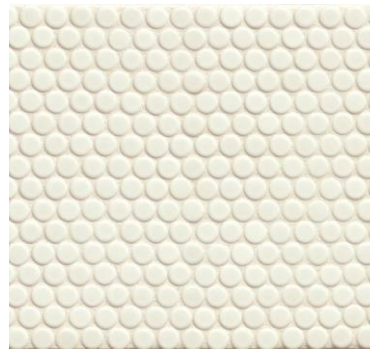
HARDWARE 625-160SN



**MOEN ALIGN 8"
BRUSHED NICKEL
SINGLE LEVER**



**COUNTERTOPS
CAMBRIA
SANDGATE**



**SHOWER FLOOR
WHITE PENNY ROUNDS**



**SHOWER
WALLS
CATCH ICE
GLOSS 4X16**



**BATHROOM FLOOR
SERENDRA LUNA
12X24 MATTE**

Canopy Creek | 12345 Main Street, Community Town, FL, 12345



©2022. Prices, homesites, amenities, home designs, square footage and other information subject to errors, changes, omissions, deletions, availability, prior sales and withdrawal at any time without notice. Square footage numbers are approximate and may vary depending on the standard measurement used. Photos and/or drawings of homes may show upgraded landscaping and may not represent the lowest priced homes in the community. All renderings and floorplans in these materials are an artist's conceptual drawings and will vary from the actual plans and homes as built. CGC1509406

KOLTERHOMES®

SHOWCASE HOME DESIGNER FEATURES | POWDER BATH



**CABINETS
KEELIE MAPLE
DRIZZLE**



HARDWARE 625-160SN



**MOEN ALIGN 8"
BRUSHED NICKEL
SINGLE LEVER**



**COUNTERTOPS
CAMBRIA
SMITHFIELD**

Canopy Creek | 12345 Main Street, Community Town, FL, 12345



©2022. Prices, homesites, amenities, home designs, square footage and other information subject to errors, changes, omissions, deletions, availability, prior sales and withdrawal at any time without notice. Square footage numbers are approximate and may vary depending on the standard measurement used. Photos and/or drawings of homes may show upgraded landscaping and may not represent the lowest priced homes in the community. All renderings and floorplans in these materials are an artist's conceptual drawings and will vary from the actual plans and homes as built. CGC1509406

KOLTERHOMES®

SHOWCASE HOME DESIGNER FEATURES | WET BAR



**CABINETS
KEELIE MAPLE
DRIZZLE**



HARDWARE 625-160SN



**MOEN ALIGN 8"
BRUSHED NICKEL
SINGLE LEVER**



**COUNTERTOPS
CAMBRIA
TORQUAY**

Canopy Creek | 12345 Main Street, Community Town, FL, 12345



©2022. Prices, homesites, amenities, home designs, square footage and other information subject to errors, changes, omissions, deletions, availability, prior sales and withdrawal at any time without notice. Square footage numbers are approximate and may vary depending on the standard measurement used. Photos and/or drawings of homes may show upgraded landscaping and may not represent the lowest priced homes in the community. All renderings and floorplans in these materials are an artist's conceptual drawings and will vary from the actual plans and homes as built. CGC1509406